

Commissioning Specialists for Mission-Critical Facilities



dataquestcx.com

SERVICE PROFILE

Table of Contents

03

DataQuestCX Overview

04

Commissioning Advisory &
Program Management

05

Performance Validation &
Integrated Testing

09

Reliability & Technical
Support

10

Why DataQuestCX?

11

White Paper: The \$15-20M
Problem Delaying Your Next
Data Center





DATAQUESTCX

Validated. Documented. Mission-Ready.

DataQuest Commissioning (CX) ensures mission-critical facilities perform flawlessly from day one.

We help developers, EPCs, and hyperscale operators prove—under load, stress, and scrutiny—that every system works exactly as designed.

We are a disciplined, cross-functional commissioning partner that de-risks the world's most demanding projects, delivering measurable certainty in power, cooling, and controls.

From advisory through Level 6 Integrated Systems Testing (IST), we provide end-to-end assurance that your data center operates at peak reliability and full compliance—anywhere in the world, on your schedule.

CORE SERVICES

Commissioning Advisory & Program Management

"Plan the Test—Then Test the Plan."

DataQuest CX supports owners, developers, and EPC teams from design through turnover—defining commissioning strategy, documentation standards, and test protocols that guarantee traceable, repeatable results.

Key Capabilities

- Commissioning (Cx) program development and Level 0–3 planning
- Alignment of the Basis of Design (BoD) and Owner's Project Requirements (OPR)
- Factory witness testing and vendor coordination strategy
- Schedule integration with construction and energization milestones
- Owner's representation and risk oversight
- Documentation control and regulatory compliance tracking

Outcome: Fewer surprises, faster energization, and complete confidence that every prerequisite is met before power-on.





Performance Validation & Integrated Testing

We validate system performance under real-world stress.

DataQuest CX executes comprehensive commissioning and verification of mechanical, electrical, and control systems—confirming that every sequence, alarm, and interlock functions as intended.

Core Services Under Performance Validation

Commissioning Scripts & Close-Out Packages

“The Blueprint for Flawless Start-Up.”

We develop tailored Functional Performance Test (FPT) scripts and verifiable Close-Out Packages. Each script defines clear performance metrics, verifies completion of prerequisite levels (L2–L3), and secures stakeholder sign-off before testing.

Outcome: Systematic verification, error detection, and complete traceability for turnover.

We Catch Failures Before They Catch You

Factory Acceptance Testing (FAT)

"Tested Today. Trusted Tomorrow."

We oversee FATs for generators, Uninterruptible Power Supplies (UPSs), switchgear, and cooling units at manufacturer sites—verifying functionality, firmware, and sequence control before shipment.

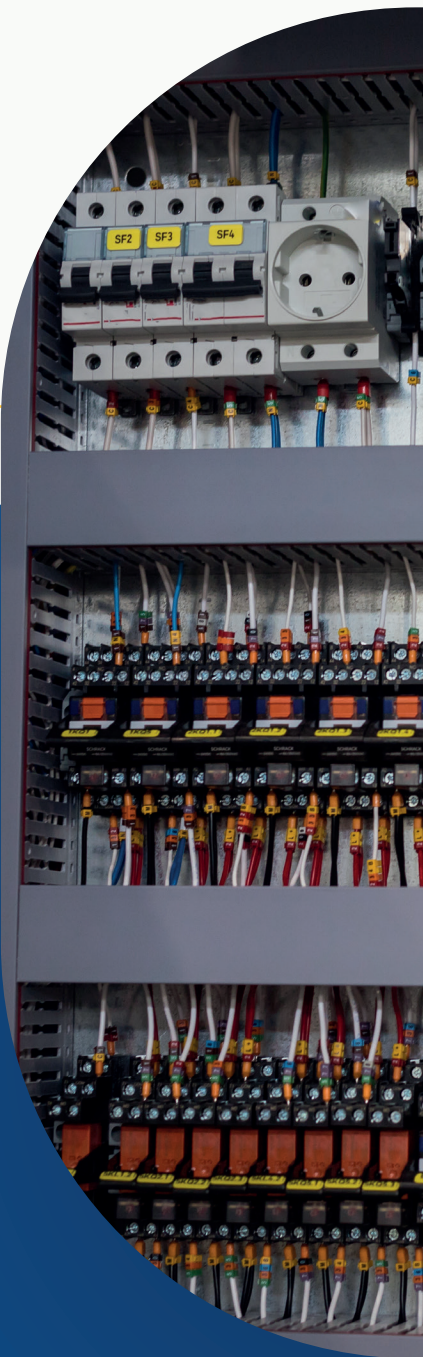
Outcome: Zero on-site surprises, reduced commissioning risk, and minimized rework.

Thermographic Inspection

"Catch the Heat—Keep the Uptime."

Infrared (IR) scanning identifies hot spots, loose terminations, and thermal anomalies during live operations, performed to NFPA 70E (Electrical Safety in the Workplace) and NFPA 70B (Electrical Equipment Maintenance) standards.

Outcome: Early fault detection, enhanced reliability, and verified system health.





Performance Validation & Integrated Testing

System Energization & Dynamic Load Bank Testing

We validate electrical and mechanical systems under real operational loads, adhering to NFPA 110 (Emergency and Standby Power Systems) and ISO 8528 (Reciprocating Internal Combustion Engine Driven Alternating Current Generating Sets).

Testing confirms system integrity, power quality, and relay performance during energized operation.

Outcome: Proven operational resilience and full documentation of power quality and protection settings.

Push it to the Limit—Before It Matters

Systems Integration & Integrated Systems Testing (IST, L4–L6)

“From Complex Systems to One Mission-Ready Machine.”

We verify full ecosystem performance—power, cooling, controls, and monitoring—under integrated failure scenarios.

Tests include Electrical Power Monitoring System (EPMS) and Supervisory Control and Data Acquisition (SCADA) interlock verification, control power transfer, and alarm hierarchy validation.

Outcome: Confirmed resilience, unified performance, and verified Key Performance Indicators (KPIs) such as Power Usage Effectiveness (PUE), Data Center Infrastructure Efficiency (DCIE), Water Usage Effectiveness (WUE), and Energy Reuse Effectiveness (ERE).





Reliability & Technical Support

“Prove Performance. Preserve Uptime.”

After turnover, DataQuestCX continues to support reliability through trending analysis, re-commissioning, and root-cause investigation.

We document, analyze, and verify system performance to maintain compliance and operational efficiency throughout the facility lifecycle.

Key Capabilities

- Seasonal and recurring re-commissioning
- Trending and Power Quality Monitoring (PQM) analysis
- Alarm and control optimization
- Documentation updates and lessons-learned reports
- Owner training and readiness validation

Outcome: Sustained reliability, regulatory compliance, and measurable uptime performance.

Why DataQuest CX?

Veteran Discipline. Global Experience. Documented Certainty.

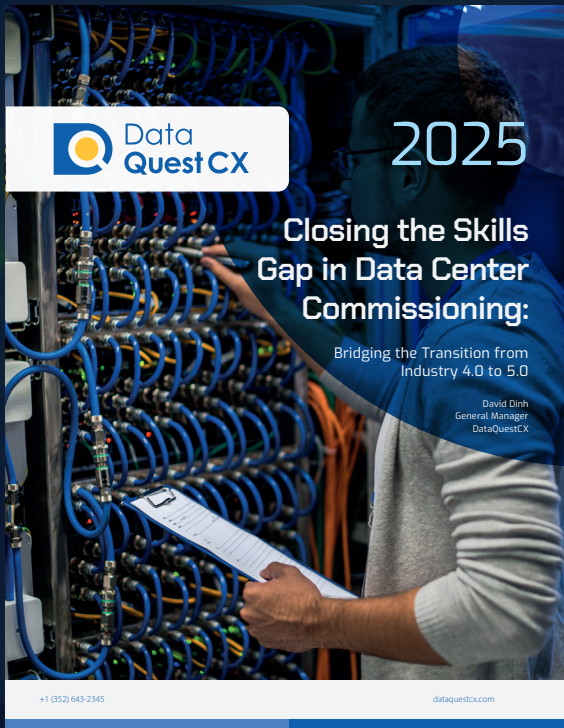
We blend the precision of engineering with the discipline of field validation—bridging the gap between design intent and operational reality.

Our team has commissioned mission-critical capacity across North America, delivering confidence to owners, developers, and EPC partners alike.

Core Strengths

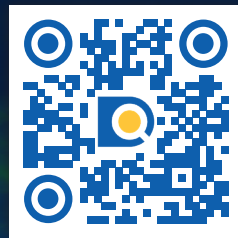
- Full-spectrum commissioning (LO–L6, IST)
- Mechanical, electrical, Building Management System (BMS), Electrical Power Monitoring System (EPMS), Fire and Life Safety (FLS), and security system integration
- Data-driven reporting and traceability for every phase
- Proven expertise in hyperscale and enterprise deployments





WHITE PAPER

Closing the Skills Gap in Data Center Commissioning



Download on our website



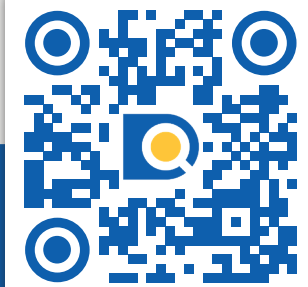
CONTACT US



428 S Persimmon Street
Tomball, Texas 77375 USA

PHONE
+1 (352) 643-2345

WEB
dataquestcx.com



Scan this code to view
our website